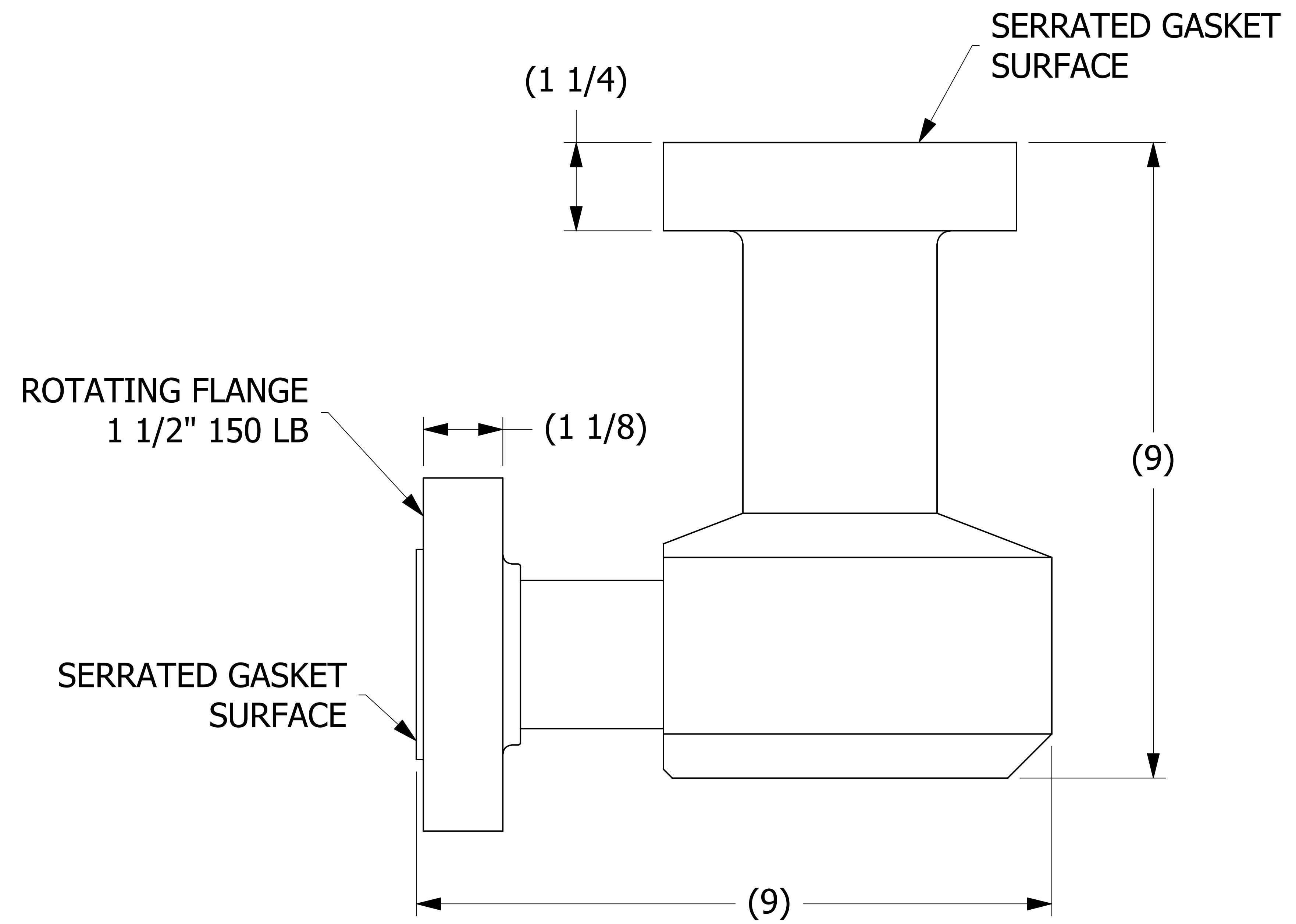
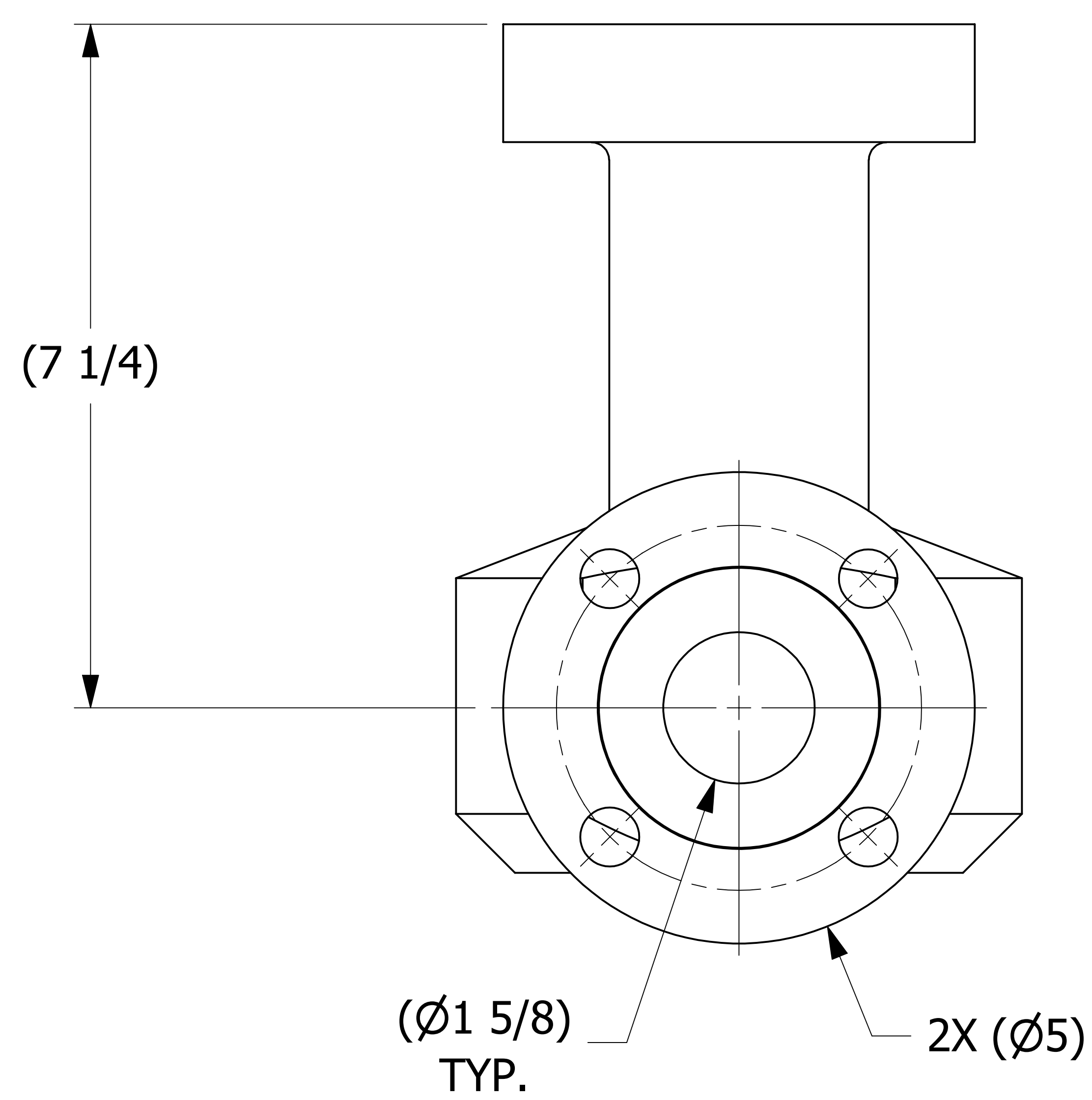
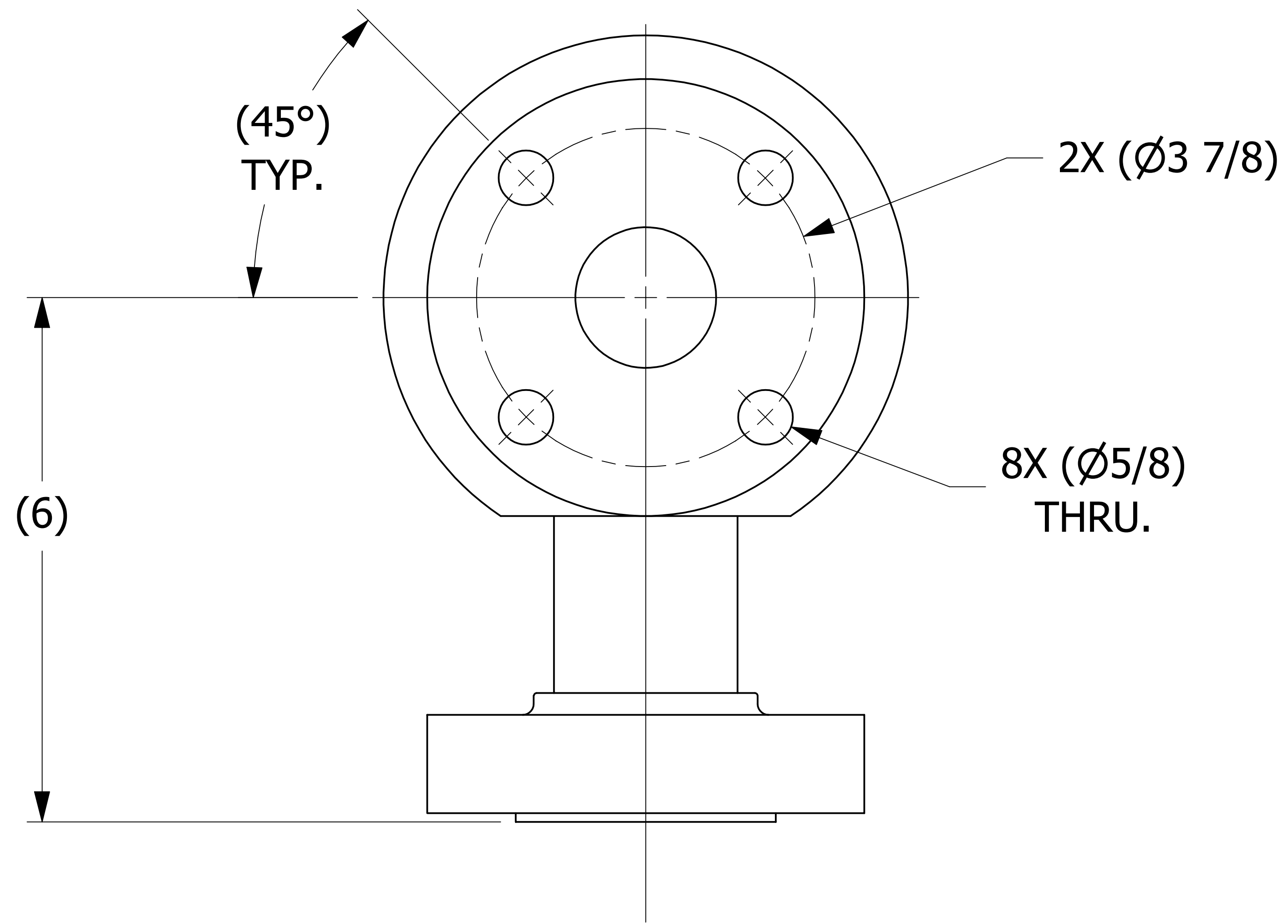


SALES DRAWING SALES DRAWING

SALES DRAWING SALES DRAWING



A	TAK	11-3-15	RELEASED FOR PRODUCTION
REV	BY	DATE	DESCRIPTION

<small>UNLESS OTHERWISE SPECIFIED DIMENSIONAL TOLERANCES FRACTIONAL: ±1/16 X.XX: ±.03 X.XXX: ±.015 ANGULAR: ±1° DEBURR ALL SHARP EDGES. ALL MACHINED SURFACES TO HAVE A 125 RMS FINISH UNLESS NOTED OTHERWISE.</small>	DRAWN BY:	TAK
	CHECKED BY:	EJF
	PROTOTYPE BY:	TAK
	PROTOTYPE DATE:	10/30/2015
	APPROVED FOR PRODUCTION BY:	TAK
THIRD ANGLE PROJECTION	PRODUCTION DATE:	11/3/2015

SALCO PRODUCTS, INC.		
PART NAME: PIPE ELBOW 1 1/2"X90°		
MATERIAL: SALCO PE		
PROJECT #: H150622	SHEET #: 1 OF 1	SCALE: 1:1
DRAWING #: E42625	PART #: HS15X90PE7	